



PEELING LINE To Remove Dead Skin Cells, Impurities
and Blackheads to leave the skin Soft and Smooth

OxygenCeuticals Peeling Training Material

Daily Botanicals Enzyme Peel

Double Peel

Regenon Fill LHA



01. OxygenCeuticals Peeling

Why Exfoliation is Needed



When the skin maintains a normal turnover cycle, it helps protect against harmful external substances and irritation. However, if dead skin cells **accumulate excessively** they can make the skin appear dull and rough, and may contribute to acne and other skin issues, making regular exfoliation and care essential.

Our skin undergoes a regeneration cycle, also known as a turnover cycle, in which **keratinocytes are continuously generated and shed approximately every four weeks**. Through this process, the skin regenerates itself, maintaining a healthy condition, and the normal shedding of dead skin cells helps protect against external pollutants and irritants.

However, if dryness persists for a long time, **excessive sebum is produced, or the skin's oil-moisture balance is disrupted, the shedding process may not function properly**, leading to an excessive buildup of dead skin cells. This accumulation can cause various skin issues, making the skin appear dull and rough, and in severe cases, result in white flaking. Such dead skin cells can clog pores, leading to breakouts and other skin concerns. Therefore, when the turnover cycle is disrupted, or there is an excessive buildup of dead skin cells, **artificial exfoliation using peeling agents or peeling gels is necessary**.

Excessive exfoliation, however, can irritate the skin and cause inflammation, **so it is important to follow an appropriate exfoliation routine**. Selecting the right exfoliation method based on skin type and condition, along with maintaining a proper skincare routine, is essential for keeping the skin healthy.

01. OxygenCeuticals Peeling

Exfoliation Method

Exfoliation Methods Based on Skin Type and Concerns

Exfoliation Method	Physical	Chemical*
	Removing dead skin cells from the skin's surface through physical exfoliation methods such as gommage, scrubs, and peel-off masks.	Exfoliation dead skin cells by directly dissolving them with active ingredient such as AHA, BHA, PHA, LHA.

*Through the chemical exfoliation process using specific acid ingredients, the structural bonds between excessively accumulated dead skin cells are broken down, effectively removing them. Simultaneously, controlled damage is induced to the targeted skin layer, stimulating the skin's natural healing process. As the wounds heal, new tissue regeneration is promoted, leading to overall skin improvement.

OxygenCeuticals Peeling Products Comparison

	Skin Type	OC Product	Function/Exfoliation Method	Effects/Results
Physical (Gommage)	Dry, Sensitive Skin	Daily Botanicals Enzyme Peel	Gommage ingredients bind with dead skin cells and roll off to remove them	Among physical exfoliation methods, it is relatively gentle, as it clumps together with dead skin cells and removes them softly. Recommended for sensitive and delicate skin.
AHA (Water Soluble)	Dry, Aging Skin	Double Peel	Removes dead cells from the outermost layer of the skin, helping to manage dry, thickened skin surface, and fine lines.	1. Promotes the shedding of keratinocytes from the epidermis, refining skin texture for a smoother appearance. 2. Inhibits melanin synthesis to help brighten the skin. 3. Stimulates fibroblasts, accelerating the regeneration process.
BHA (Oil Soluble)	Oily, Acne-Prone Skin		Blends with the epidermal lipid barrier, allowing easy penetration between pores. It breaks down the protein structure of thickened keratinocytes while directly removing trapped sebum and impurities.	1. Prevents excessive keratinization within pores and regulates excess sebum production. 2. Inhibits pore blockage and bacterial activity that leads to acne. 3. Provides anti-inflammatory effects by suppressing the expression of enzymes that trigger inflammatory responses.
LHA (Oil Soluble)	Oily, Sensitive Skin	ReGenon Fill LHA	Gradually penetrates the skin with minimal irritation, primarily working on the upper layer of the stratum corneum and acting selectively within the pores.	1. Easily dissolves in skin lipids, making it ideal for acne-prone skin. 2. Adjusts pH levels to gently remove excess dead skin cells. 3. Regulates sebum and exfoliation while maintaining the skin barrier with a mild, slightly acidic formula.

01. OxygenCeuticals Peeling

Product Target Comparison

Product Name	Daily Botanicals Enzyme Peel	Double Peel	Regenon Fill LHA
Texture			
Skin Type	<ul style="list-style-type: none"> ✓ Rough and Dull Skin ✓ Accumulated Dead Skin Cells 	<ul style="list-style-type: none"> ✓ Pores & Excessive Sebum ✓ Acne Prone Skin 	<ul style="list-style-type: none"> ✓ Hyper Pigmentation ✓ Anti-Aging ✓ Elasticity
Key Ingredient	Cellulose / Papaya Fruit Extract	AHA (Lactic Acid/Glycolic Acid) BHA (Salicylic Acid)	LHA (Capryloyl Salicylic Acid)

02. Daily Botanicals Enzyme Peel

#Gommage

#ExcessiveDeadSkin

#Enzymes

Product Introduction

A gentle gommage peel that exfoliates even sensitive skin, utilizing **cellulose** particles that lift away accumulated dead skin cells and impurities through mild physical friction.

Clinical Testing *When used with Skin Balancing Toner, BH Mask

- 1) Reduction in Accumulated Dead Skin Cells
- 2) Improve Skin Turnover
- 3) Verification of 48-hour Moisture Retention
- 4) Improvement of Skin Texture

Size

75ml / 250ml

Recommended Skin Types

- ✓ Dry and sensitive skin
- ✓ Skin with excessive accumulated dead skin cells and makeup does not apply smoothly
- ✓ Skin with noticeable whiteheads on the T Zone and around the nose



02. Daily Botanicals Enzyme Peel

Ingredient Analysis

| Cellulose + Papaya Fruit Extract

Double Exfoliation Care that neatly removes dead skin cells and impurities

Formulated with naturally derived ingredients, it is safe for the skin and provides exfoliation, skin regeneration and brightening effects.

+ Cellulose

- 1. Hydration** : Helps absorb and retain moisture, keeping the skin hydrated.
- 2. Protection** : Shields the skin from external irritants and dryness while strengthening the skin barrier to maintain overall skin health.
- 3. Soothing** : Calms the skin, reduces redness and irritation, making it suitable for sensitive skin.
- 4. Softness** : Enhances skin flexibility, leaving it soft and supple.
- 5. Elasticity** : Improves skin elasticity and helps prevent signs of aging.

+ Papaya Fruit Extract

- 1. Exfoliation** : Contains Papain, a proteolytic enzyme that gently breaks down and removes skin cells and impurities.
- 2. Regeneration** : Promotes skin regeneration, aiding in wound healing and skin recovery.
- 3. Antioxidant Action** : Rich in antioxidants like Vitamin C and carotenoids, protecting the skin and preventing damage.
- 4. Brightening** : Helps brighten the skin tone, leaving it radiant and luminous.
- 5. Hydration** : Provides hydration and helps maintain moisture balance, reducing dryness.



02. Daily Botanicals Enzyme Peel

Clinical Trial Results

※ Skin Exfoliation Efficacy Evaluation

After 1 use, keratin was significantly reduced by 17.503%
→ 100.0% of test participants responded positively, agreeing that their skin felt improved.



※ 48 Hour Long-Lasting Moisturization

48 hours after use, the moisture level (ε) value significantly increased by 65.312%.
→ 95.2% of the test participants responded positively to the long lasting moisturization effect.

※ Skin Texture Improvement

After 1 use, skin roughness significantly decreased by 11.188% indicating an improvement in skin texture.
→ 100.0% of test participants responded positively to the skin texture improvement.

※ Skin Turnover Efficacy Evaluation

After 1 week of use, analysis of the intensity value which indicates skin turnover, showed a significant reduction of 37.224%.



03. Double Peel

#AHA+BHA

#AcneSkin

#WashOffPeel

Product Introduction

With the optimal peeling balance of AHA(24.5%)+BHA(0.5%) it effectively targets excess dead skin cells and pores, reaching deep into the skin crevices for thorough care

Clinical Testing

Clinical Test for Acne-Prone Skin Suitability

- Visual Assessment by Experts
- Sebum Measurement
- Efficacy Self-Assessment Survey

Size

50ml

Recommended Skin Types

- ✓ Skin troubled by redness and breakouts
- ✓ Oily skin with excessive sebum
- ✓ Skin that needs hydration even after peeling



03. Double Peel

Ingredient Analysis

| AHA Lactic Acid / Glycolic Acid / Citric Acid : 24.5%

AHA, or Alpha Hydroxy Acid is a naturally occurring ingredient found in fruit acids and lactic acid. It gently exfoliates dead skin cells on the surface, promoting new cell growth, improving skin texture, and brightening skin tone. Additionally, AHA helps increase skin moisture levels and enhances skin elasticity.

- 1. Exfoliation:** Removes aged skin cells from the surface, promoting new cell growth and leaving the skin smooth and refined.
- 2. Skin Regeneration:** Enhances the skin renewal process, aiding in wound healing and skin recovery.
- 3. Pore Minimization:** Helps tighten pores, improving skin texture while preventing acne and blackheads.

| BHA Salicylic Acid : 0.5%

BHA, or Beta Hydroxy Acid is commonly known as Salicylic acid.

Unlike other acids, it is oil-soluble, allowing it to penetrate deep into pores, effectively removing sebum and impurities that cause acne. Additionally, BHA soothes inflammation and reduces redness, making it ideal for acne-prone and oily skin.

- 1. Acne Improvement:** Removes sebum and impurities from deep within the pores, helping to prevent and reduce acne.
- 2. Pore Care:** Helps tighten pores and control sebum, improving overall pore appearance.
- 3. Exfoliation:** Gently removes dead skin cells, leaving the skin smooth and refined.

03. Double Peel

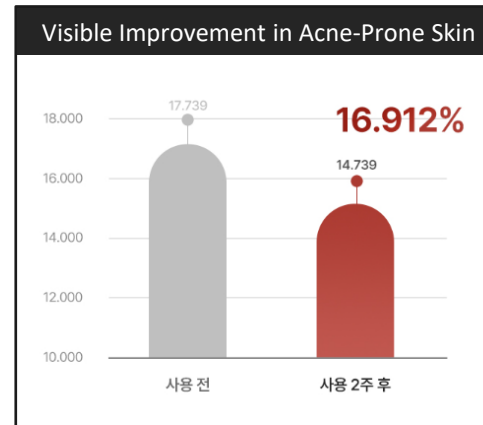
Clinical Trial Results

With 2 weeks of Double Peel usage, it helps to improve acne and sebum control without increasing breakouts, **making it suitable for acne-prone skin.**

※ Acne-Prone Skin Suitability

After 2 weeks of use, GAGS score significantly decreased by **16.912%**.

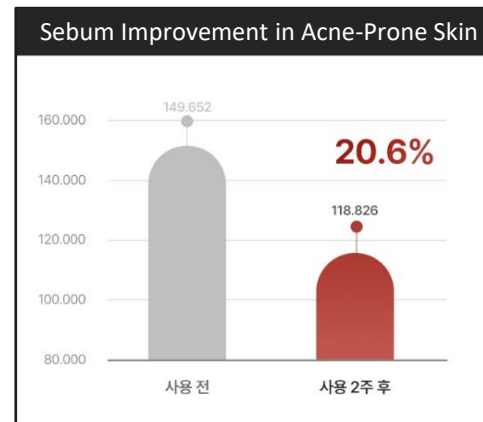
→ **100%** of the test participants responded positively to the products suitability for acne-prone skin.



※ Sebum Improvement

Analysis of sebum levels ($\mu\text{g}/\text{cm}^2$) showed a significant reduction of **20.598%** after 2 weeks of use, indicating improved sebum control.

→ **95.6%** of the test participants responded positively to the sebum improvement effect.



04. Regenon Fill LHA

#Chemical

#FillingPeel

#LHAPeel

Line Introduction

The ReGenon line is formulated with stabilized Niosome technology, delivering concentrated Idebenone to enhance skin absorption, providing antioxidant and anti-aging benefits.

Clinical Testing

- 1) Improvement in Skin Radiance (Shine, Glow)
- 2) Strengthening of Skin Barrier
- 3) Skin Irritation Test

Size

50ml

Recommended Skin Types

- ✓ Dry and rough skin lacking moisture
- ✓ Dull skin affected by pigmentation
- ✓ For gentle, non-irritating exfoliation
- ✓ To maintain a healthy skin turnover cycle



04. Regenon Fill LHA

Ingredient Analysis

| LHA Capryloyl Salicylic Acid : Includes 50,000ppm

LHA has a pH level that is almost identical to the normal skin pH of 5.5, so, it does not cause irritation due to pH and does not require neutralization. Due to its oil-loving, lipophilic nature, it slowly penetrates the skin and provides a more effective exfoliating effect even at low concentrations.

It primarily acts on the upper layer of the skin, working gently on the skin and removing dead skin cells through a process similar to natural peeling, making it safe and less irritating.

LHA induces epidermal regeneration, increase collagen formation, and reduces pigmentation caused by UV exposure, helping to restore photoaged skin Unlike AHA, it also has a photoprotective effect that helps prevent damage caused by UV rays.

| "Filling Peel" Process – LHA Benefits

01

Acts Gently on the Skin
(Active ingredients penetrate deep into the skin)

→ Works on the upper layer of the skin

02

Excess Keratin Shedding
(Normalization of the skin turnover cycle)

03

Fibroblast Development
+ Collagen Formation

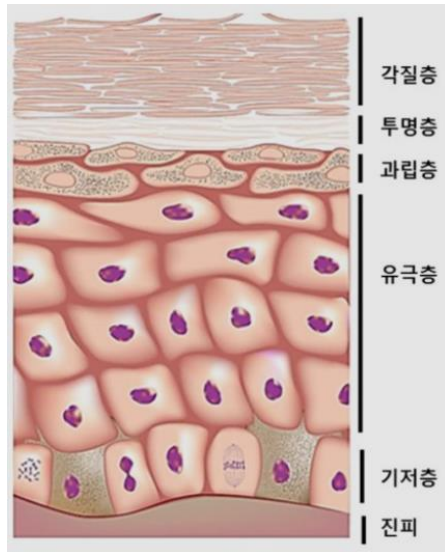
04

Deep Skin Nourishment to Maintain Healthy and Balanced Skin

04. Regenon Fill LHA

Ingredient Analysis

| "Filling Peel" Differentiation Points



• Structure of the Skin

Role → Protects the skin from external irritants and prevents the penetration of foreign substances

The stratum corneum contains 30% of the epidermal moisture → When moisture levels decrease, keratin thickens, leading to rough texture and dryness. To maintain hydration sebum / NMF (Natural Moisturizing Factors) / intercellular lipids must all be in health balance.

| Enhanced Moisture Retention: Panthenol & Soybean Sterols

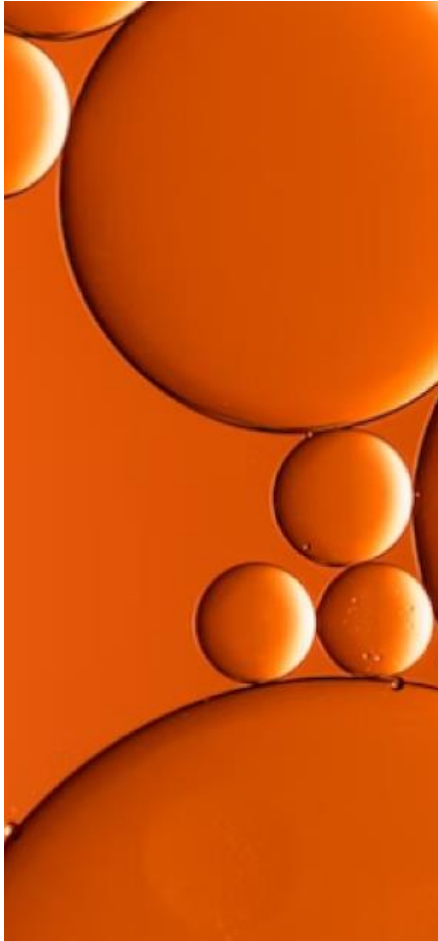
+ Soybean Sterol : A blend of phytosterols derived from Glycine Soja (Soybean) help soften the skin and enhance moisture-binding capacity, keeping the skin hydrated and supple

+ Panthenol : Converted to Vitamin B5 in the skin, it strengthens the natural moisture barrier, aiding in the fast recovery of skin damage such as wounds and burns. It provides various skin benefits, including: skin regeneration, moisture retention, inflammation relief, skin protection, soothing effects.

04. Regenon Fill LHA

Ingredient Analysis

| “Filling Peel” Differentiation Points



- **Relationship Between Exfoliation and Antioxidation.**

Excessive keratin buildup can negatively impact skin health, often occurring in dry environments. **In such conditions, the skin requires antioxidants, which help protect against free radicals and prevent future damage, ensuring that the stratum corneum does not thicken excessively.** Proper exfoliation enhances skin absorption and maximizes the effectiveness of moisturizers. This allows the skin to remain healthy, enabling antioxidants to penetrate deeply and work more effectively.

| **Antioxidation : Sodium DNA & Hydroxydecyl Ubiquinone**

+ Sodium DNA : A stabilized form of Vitamin C that acts as an antioxidant, protecting the skin from free radicals and oxidative stress. It helps inhibit tyrosinase enzyme activity, thereby reducing melanin production, which aids in improving freckles, dark spots, and uneven skin tone, resulting in a brighter complexion.

+ Hydroxydecyl Ubiquinone (Idebenone) : A Coenzyme Q10 (CoQ10) derivative with higher water solubility and significantly strong effects than Vitamin C, Vitamin E and CoQ10. It prevents lipid peroxidation in cell membranes through antioxidant and quenching effects, protecting the skin from oxidative stress, caused by reactive oxygen species (free radicals) – a key factor in skin aging – to maintain a radiant and youthful appearance.

Additionally, it boosts collagen production, enhancing skin elasticity, reduces wrinkles and fine lines, and inhibits melanin production, promoting a brighter and more even skin tone.

04. Regenon Fill LHA

Clinical Trial Results

✳ Skin Radiance & Glow Improvement

After 1 use, surface reflectance on one cheek area significantly increased by 33.04%.

→ 100.0% of the test participants responded positively, noticing an improvement in skin radiance, shine, and glow.



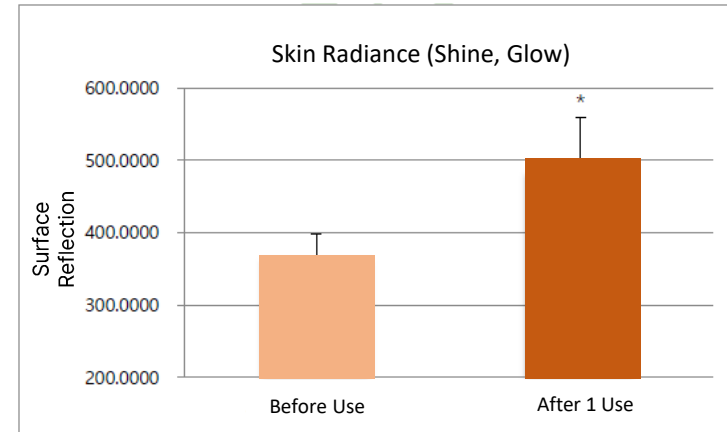
Before Use

After 1 Use

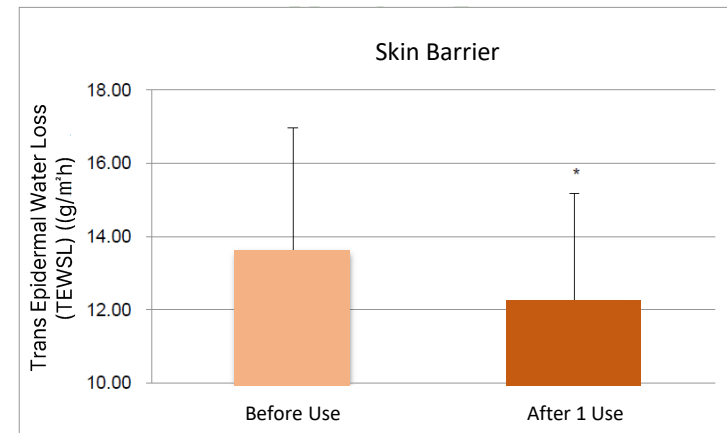
✳ Skin Barrier Strengthening

After 1 use, trans epidermal water loss (TEWL)(g/m²h) on one cheek area significantly decreased by 11.6%.

→ 100.0% of test participants responded positively, noticing an improvement in skin barrier strength.



*Significant difference ($p < 0.05$, comparison to initial value).



*Significant difference ($p < 0.05$, comparison to initial value).



OxygenCeuticals

breathe life into your skin